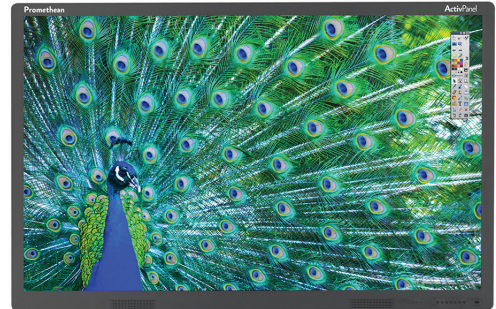


ActivPanel Touch
INTERACTIVE FLAT PANEL



THIS DOCUMENT CONTAINS SPECIFICATIONS FOR

ActivPanel Touch 65 and ActivPanel Touch 70

DESCRIPTION

The Promethean ActivPanel Touch range offers 65" and 70" interactive flat panel displays that are robust, resilient and optimized for classrooms and meeting rooms. Smooth multi-touch interactivity and Promethean's award-winning ActivInspire software ensure that all users can be active participants. ActivPanel Touch's high-definition, low-glare, low-reflectivity display offers a wide viewing angle, making any seat in virtually any room a great one. With the flexible ActivPanel Touch, it is easy to connect computers and other devices, including open pluggable specification (OPS) computers and mountable miniature computer units such as the Intel® NUC.

SYSTEM OVERVIEW

Installation	The ActivPanel Touch is compatible with VESA mounting systems. The installation of this product should be completed by a Promethean Certified Installer. Use of components not supplied by Promethean or not meeting minimum specifications may impact performance and affect warranty. Contact your Promethean partner or visit www.PrometheanKB.com for more information.
Warranty	For Promethean Warranty Terms and Conditions please visit: www.PrometheanWorld.com/ActivCare
Support	Online Support for all Promethean Products available from: www.PrometheanKB.com

UPGRADE AND ACCESSORY OPTIONS

Independent Mobile Stand	The optional Mobile Stand provides mounts compatible with the ActivPanel Touch VESA mount holes and permits use of the ActivPanel Touch without the need for wall mounting, allowing for relocation of the unit within a building
---------------------------------	---

SYSTEM REQUIREMENTS

Operating Systems	Windows (XP SP3/Vista/7/8)
PC	2.0 GHz Intel Core 2 Duo or faster for HD-quality videos, 1 GB of RAM is required to play HD quality videos, 1024 x 768 resolution, 1.5 GB of Free Disk Space

INTERACTIVE FLAT PANEL

Aspect Ratio	16:9
Resolution	Full-HD 1080p (1920 x 1080)
Optimum Resolution	1920 x 1080 @ 60Hz
Contrast Ratio	4000:1
Pixel Fault Resilience Class	ISO 13406-2 Class II
Viewing Angle	178°
Surface	4mm acid-etched tempered glass
Number of Touches	6
Response Time	8ms
Digitizing Technology	Infrared
Connection to Computer	USB 2.0 x 1
Video and Audio Input	HDMI x 1, VGA (D-Sub 15 RGB) x 1, Component In (Video Y,Pb, Pr & Stereo Audio) x 1, AV-In (Composite Video & Stereo Audio) x 1, PC Audio (3.5mm) x 1, USB 2.0 (for media playback) x 2
Video and Audio Output	AV-Out (Composite Video & Stereo Audio) x 1
Stereo Speakers	Integral, 2 x 10W
Open Pluggable Specification (OPS) Slot	1
VESA Mount Point (NUC/Mini)	4 x M4 (VESA 100 and VESA 75, bracket not included)
VESA Mount Point (Wall/Stand)	4 x M8 (VESA 400 x 600, bracket included)
Operating Temperature	+5°C to +40°C (41°F to +104°F) at 10% to 85% humidity
Storage Temperature	-20°C to +55°C (-4°F to +113°F) at 5% to 95% humidity
Power	AC
Power Consumption	340W max
Packed Contents List	ActivPanel Touch, VESA mount bolts, power cable, 5m (16ft) USB cable, Infrared Remote Control, Installation Guide, VGA cable, HDMI cable, 3.5mm audio cable, two pens, User Guide

ACTIVPANEL SPECIFICATIONS BY MODEL

	ActivPanel Touch 65"	ActivPanel Touch 70"
ActivPanel Nominal Size	65"	70"
Active Area Dimensions	1432mm x 807mm (56.4in x 31.8in)	1549mm x 872mm (61in x 34.3in)
Active Area Diagonal:	1644mm (64.7in)	1778mm (70in)
Panel Usage Type	TV	DID
Brightness (typical)	360 cd/ m2 (360 Nits)	400 cd/m2 (400 Nits)
Overall Dimensions	1536mm x 931mm x 79mm (60.5in x 36.7in x 3.1in)	1637mm x 981mm x 93mm (64.4in x 38.6in x 3.7in)
Net Weight	80.5Kg (177lb)	87Kg (192lb)
Packed Dimensions	1765mm x 1165mm x 340mm (69.5" x 45.9" x 13.4")	1895mm x 1210mm 340mm (74.6" x 47.6" x 13.4")
Packed Weight	87Kg (192lb)	101.7Kg (224lb)