

smots™

Scotia Medical Observation and Training System



case study

Hertfordshire Intensive, Care and Emergency, Simulation Centre,



Location

Hertfordshire Intensive, Care and Emergency, Simulation Centre, Hatfield

Organisation

University of Hertfordshire

Project

Installation of a 34 camera smots™ system into a simulation centre comprising A&E, ITU, ADL, Paediatric ITU, and even a Pharmacy

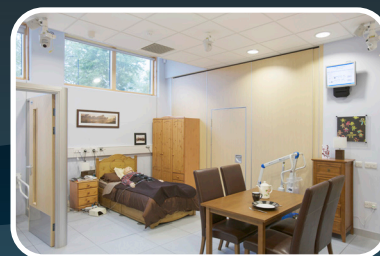


Background:



University of Hertfordshire

Guillaume had used a small video recording system for the initial simulation centre but when the new centre became a reality he turned to smots™ for a fully integrated system.



Design Considerations:



University of Hertfordshire

The system had to be user friendly, powerful enough to allow many different scenarios to run concurrently, and it had to be reliable in the extreme. The centre has been a flagship for the University and as such smots™ has contributed to the smooth running of the end result.



“We are really pleased with our bespoke smots™ installation and found Scotia a great company to do work with. All our ideas were listened to and concerns addressed. The technology meets our needs perfectly. The post installation service is great and the very dedicated staff are always easy to reach. We are really pleased with our choice.”

Essex Cardiothoracic Centre





Solution:



University of Hertfordshire

Scotia installed 34 camera and vital signs smots™ units. We also equipped three Observation Rooms (Lecture theatres) and with a clear brief, we managed to provide a fully working solution which is now one of the largest simulation centres in the UK. The centre even has a mobile unit which can be rolled out to the car park to video the arrival of a "patient", all the way through the various steps to recovery.



Result:



University of Hertfordshire

Multiple scenarios are regularly undertaken simultaneously. Ten network video recorders record the output from the 34 smots™ units and these clips can be reviewed from anywhere on the network and exported for protection as needed.

Very high security measures mean that only the correct and authorised users may view video appropriate to their work. The smots authority levels can be locked down such that only the user of a certain room may view video recordings from that room, or in other cases, perhaps anyone can view the output from a particular location if that is the desired result.

